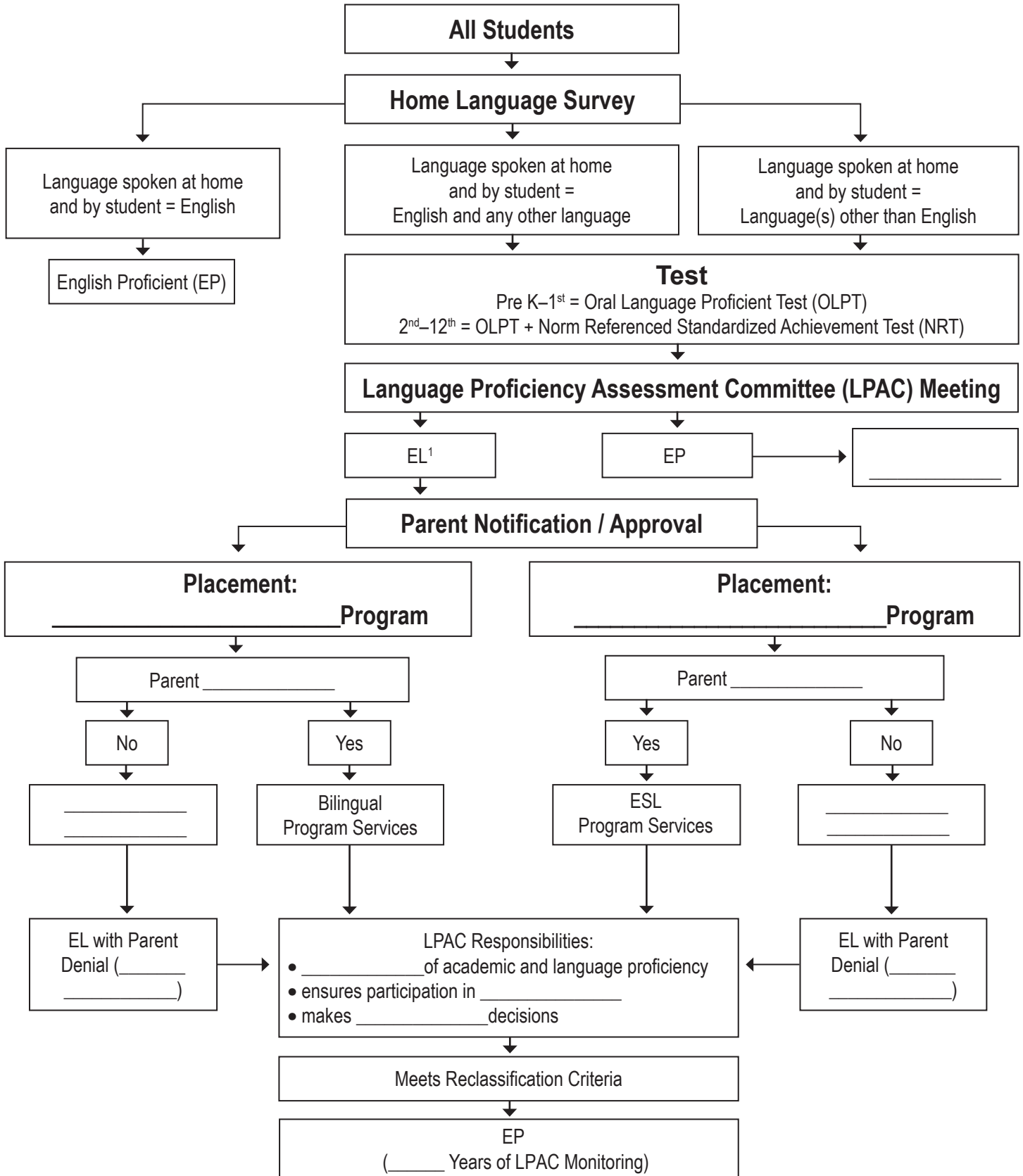


# English Learner (EL) Identification/Reclassification Flowchart



**¹Criteria for EL identification:**

Pre-K – 1<sup>st</sup> OLPT below English proficient level = EL

2<sup>nd</sup> – 12<sup>th</sup> OLPT below English proficient level and NRT at grade level

for Reading and/or English language arts below 40th percentile = EL

The terms Limited English Proficient (LEP) and English learner (EL) are used interchangeably. The term LEP is still used for data collection in the Public Education Information Management Systems (PEIMS).